

95 Express Monthly Operations Report – August 2015

General

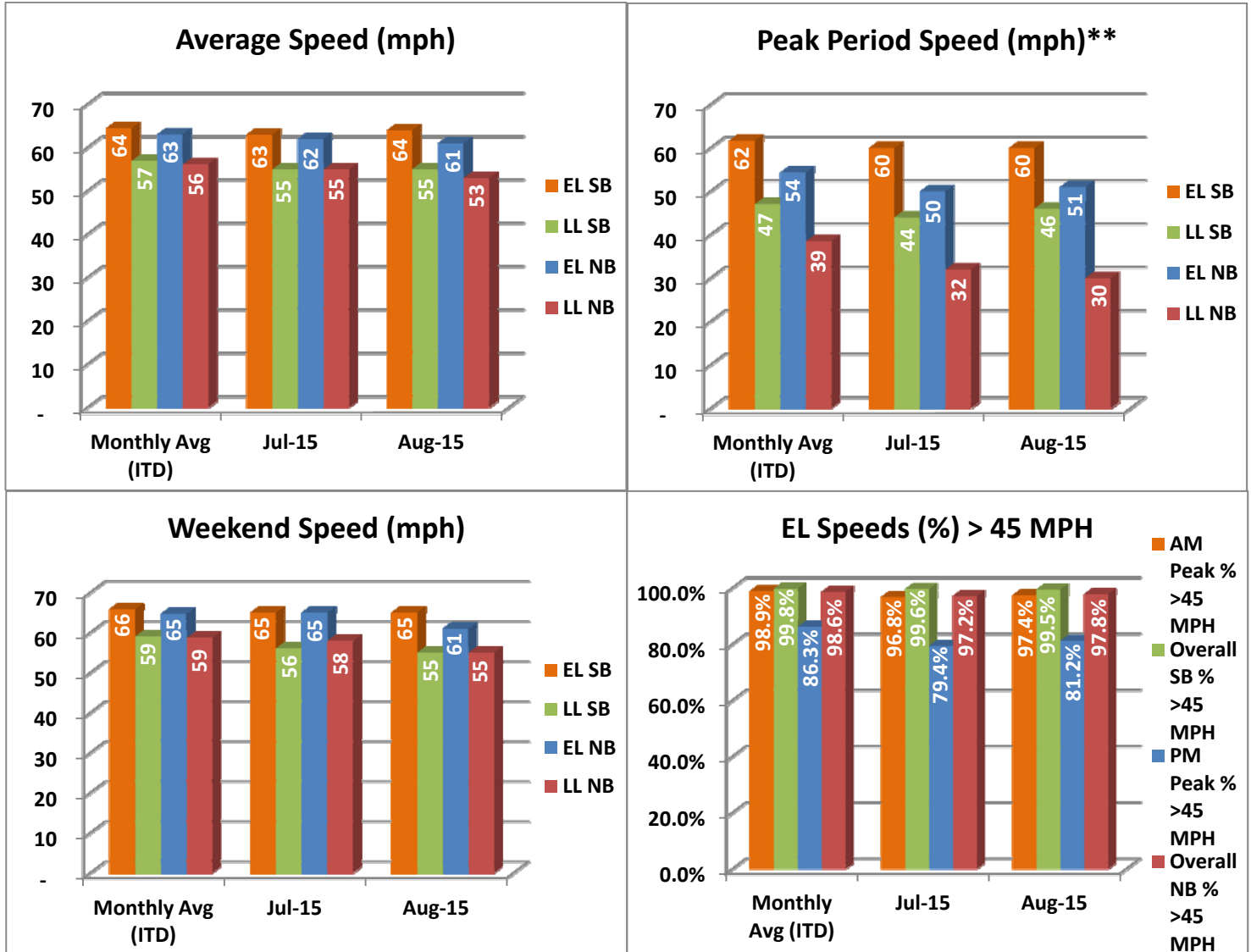
In total, the 95 Express Lanes:

- ✓ Serviced 1,706,784 vehicle trips in August 2015 (14.6 million trips in 2015), bringing the total since opening (December 5, 2008) to approximately 123.7 million trips.
- ✓ Had estimated monthly toll revenue of \$2.11 million in August 2015 (\$19.3 million in 2015), bringing the total revenue to date to approximately \$113.4 million.
- ✓ Increased to a total of 9,350 registered vehicles, resulting in 52,811 toll exempt trips.

<u>August 2015 Statistics</u>	<u>Southbound</u>			<u>Northbound</u>		
Total Trips	944,990			761,794		
Exempt Trips	29,459			23,352		
Revenue						
	\$1,072,581			\$1,034,396		
Tolls						
- Range	\$0.00 - \$10.50			\$0.00 - \$10.50		
- Avg. Weekday	\$1.54			\$1.88		
- Avg. Peak Period**	\$2.42			\$4.73		
- Avg. Weekend	\$0.53			\$0.48		
- Avg. Off Peak	\$1.28			\$1.13		
- 85 th Percentile Weekday	\$2.75			\$3.00		
Volume (veh)						
	EL	LL		EL	LL	
- Avg. Weekday	34,473	104,818		28,402	95,723	
- Avg. Peak Period**	9,301	18,124		6,408	16,313	
Speed (mph)						
	EL	LL	Δ	EL	LL	Δ
- Avg. Overall	64	55	9	61	53	8
- Avg. Peak Period**	60	46	14	51	30	21
Operated Above 45 MPH						
	99.5%			97.8%		
Remained Open to Motorists						
	87.4%			67.2%		
Closed due to Planned Construction						
	7.3%			24.0%		
Closed due to Non-recurring Events						
	5.2%			8.8%		
<i>EL (Express Lanes); LL (Local Lanes); **Peak Period is defined as 6-9 AM (southbound) and 4-7 PM (northbound).</i>						

Operations/Traffic Statistics - Speed Data

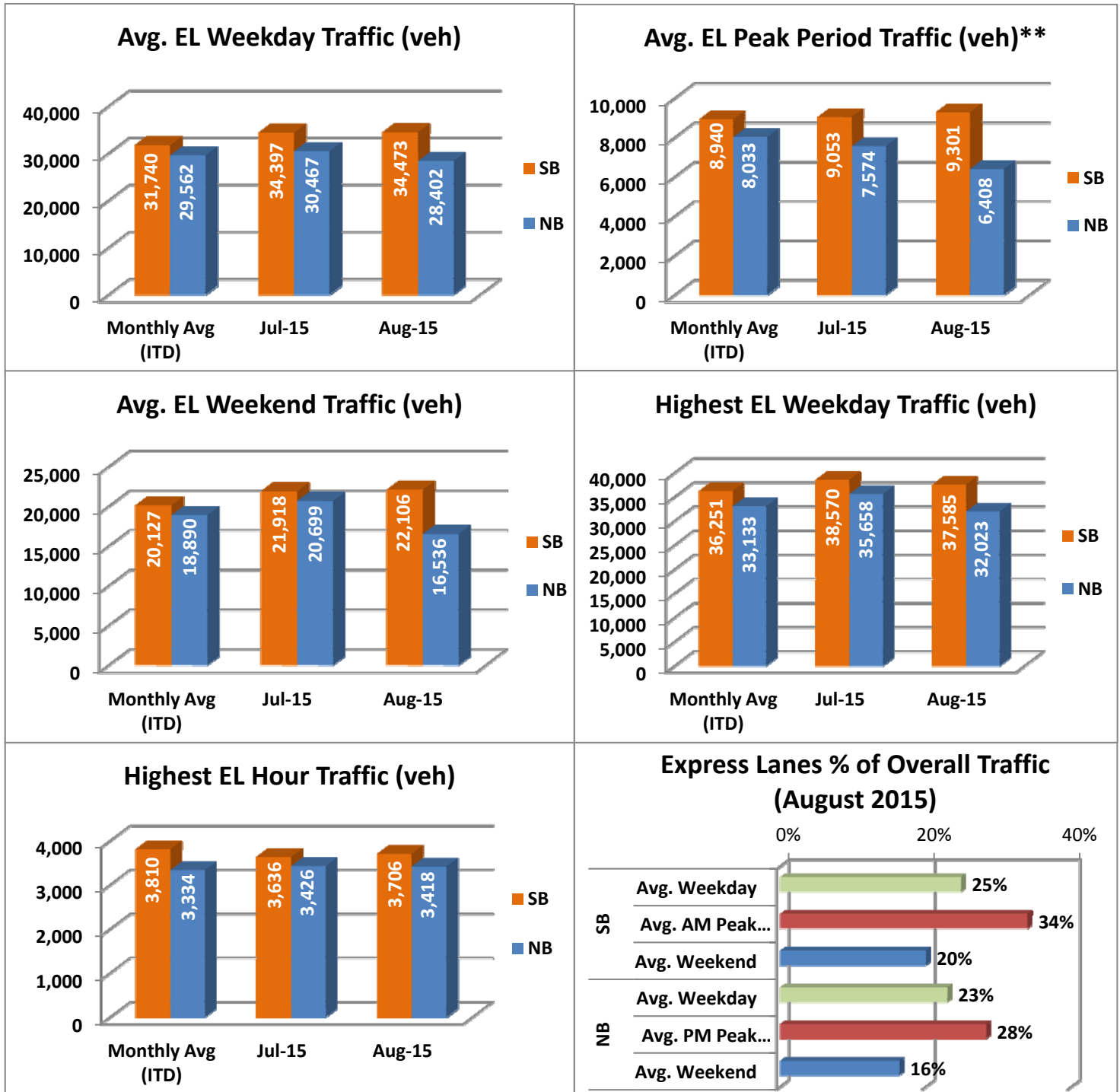
** Peak Period is defined as 6-9 AM (southbound) and 4-7 PM (northbound).



NOTE: ITD = Inception to Date; EL = Express Lanes; LL = Local Lanes

Operations/Traffic Statistics - Volume Data

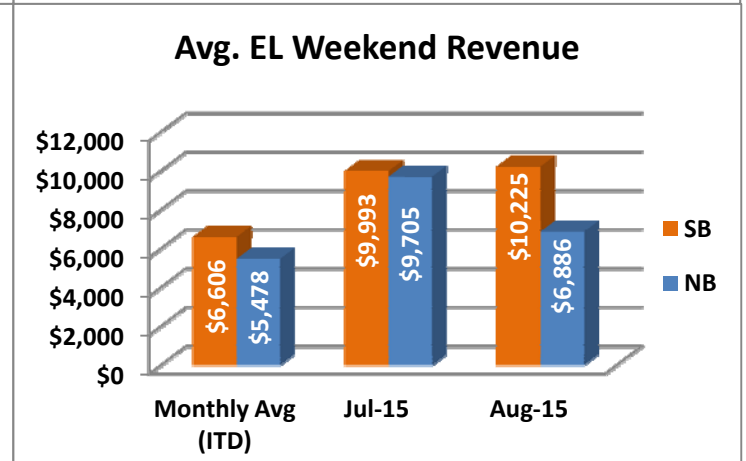
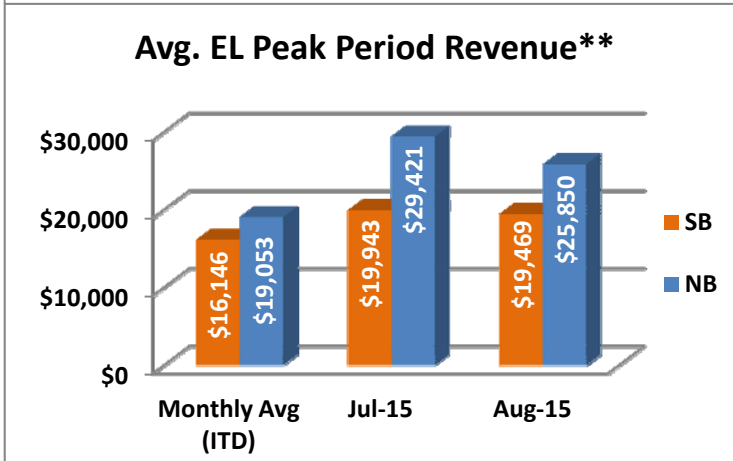
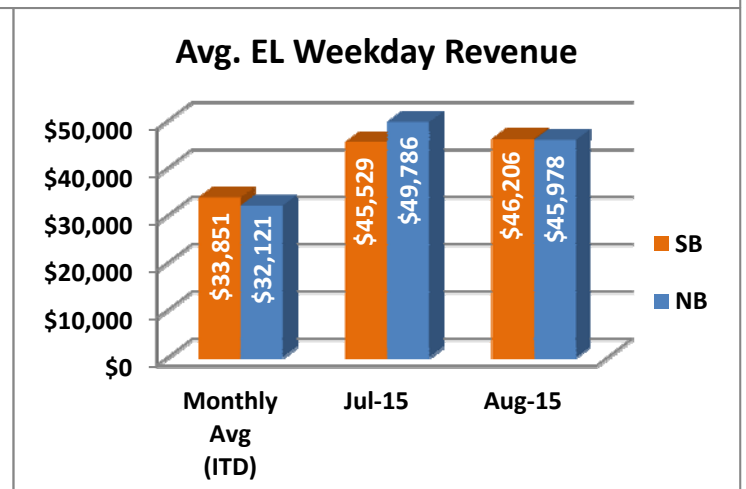
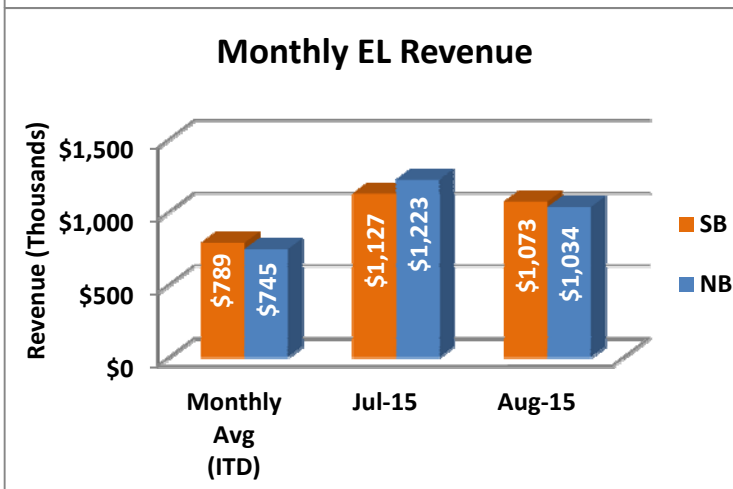
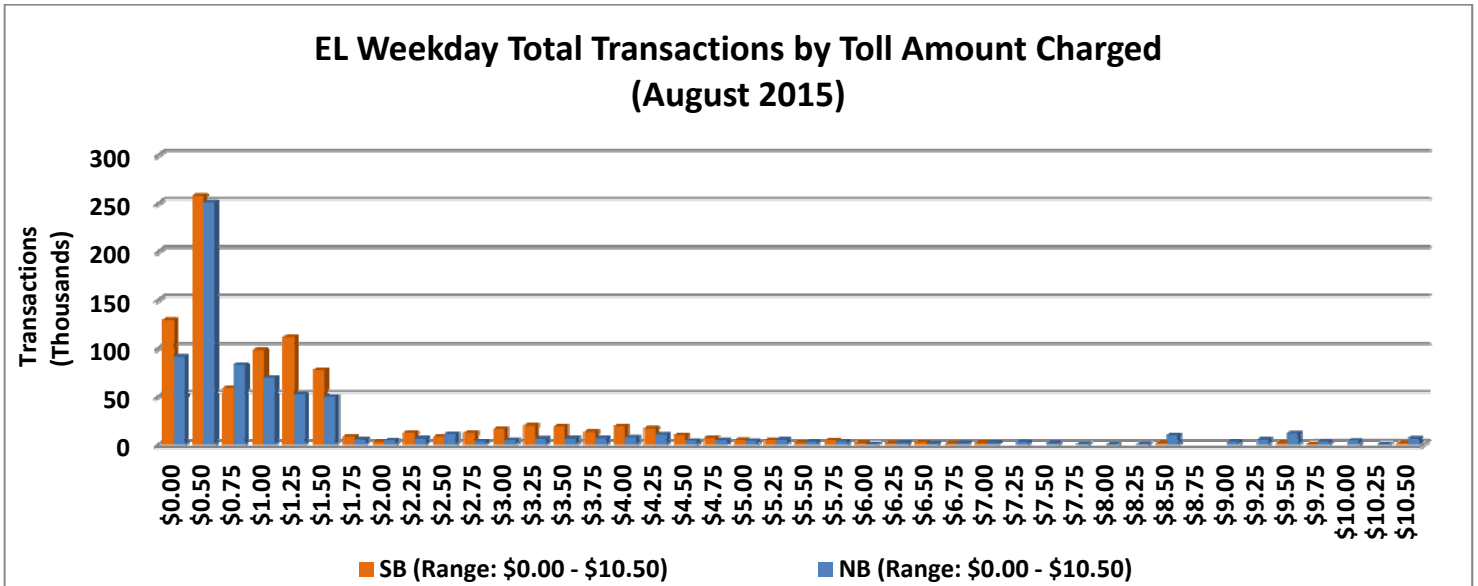
** Peak Period is defined as 6-9 AM (southbound) and 4-7 PM (northbound).



NOTE: ITD = Inception to Date

Revenue/Tolls Statistics

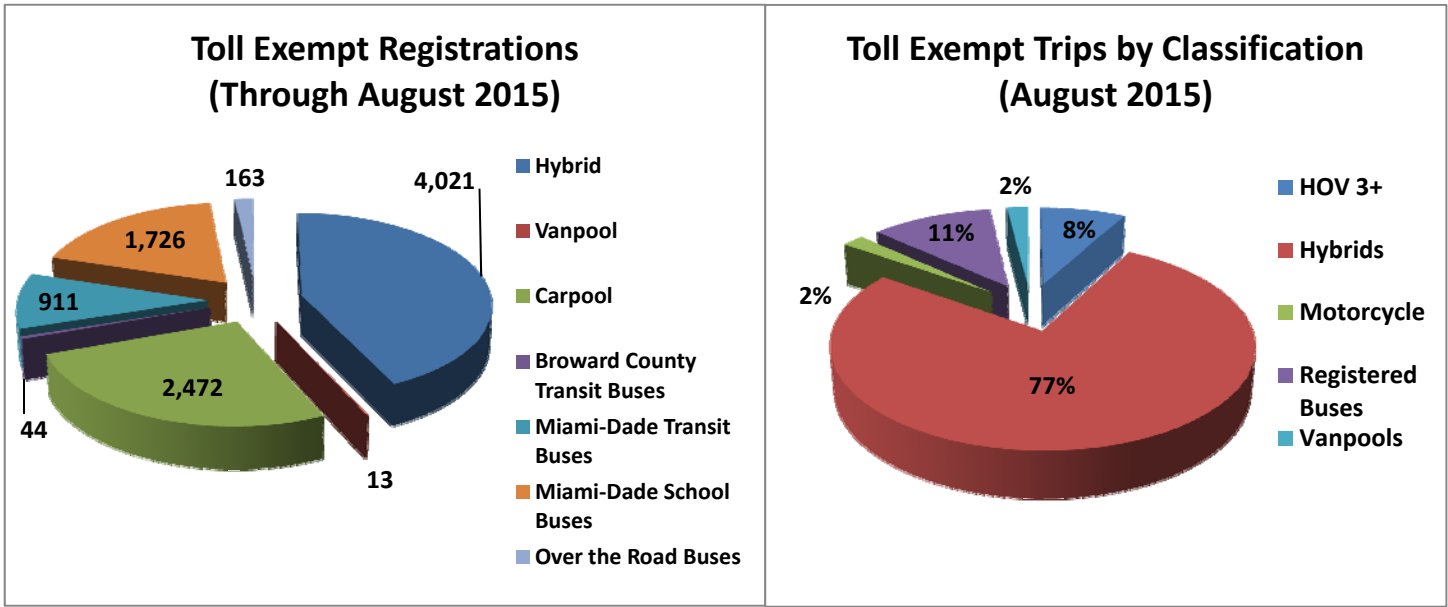
** Peak Period is defined as 6-9 AM (southbound) and 4-7 PM (northbound).



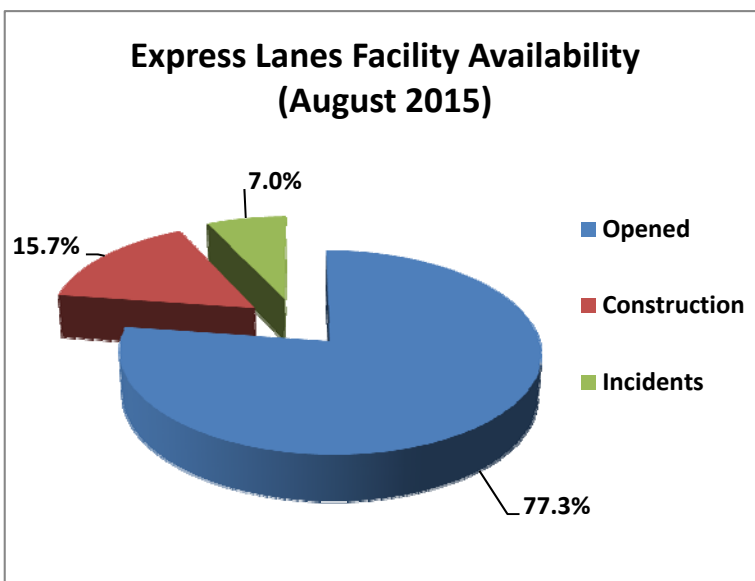
NOTE: ITD = Inception to Date

Registrations—Toll Exempt Trips

The total registrations through August 2015 increased to 9,350. The 52,811 Toll Exempt Trips for this month are shown by classification below.



Facility Availability



The entire 95 Express lanes (both directions) were open to motorists 77.3% of the time, while closed 15.7% due to 32 planned construction/ maintenance events (each lasting approximately 7 hours, 17 minutes in duration, on average) and 7.0% due to 229 non-recurring events (each lasting approximately 27.5 minutes in duration, on average).